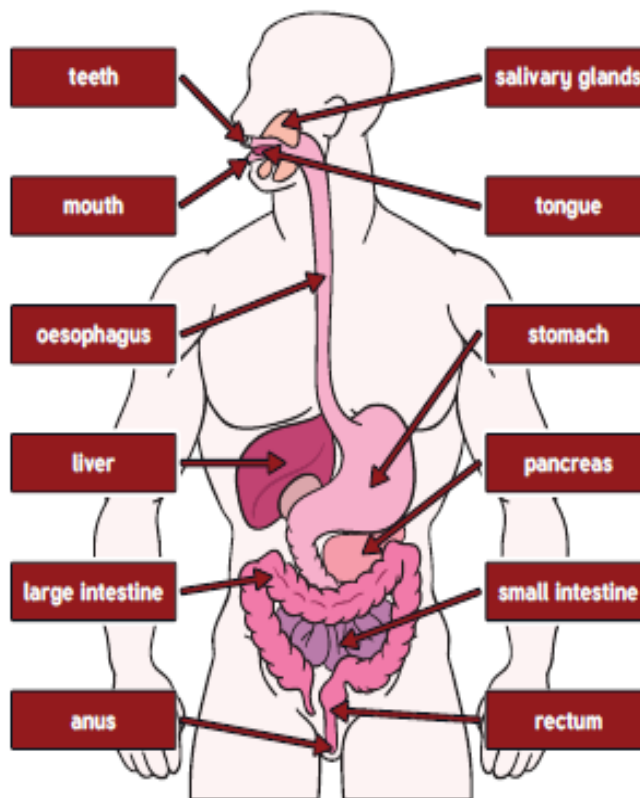


Year 3 Science - The Digestive System

Key Vocabulary

mouth	Where food enters the digestive system.
teeth	Tear, rip and chew food.
salivary glands	Produce saliva
tongue	Moves the food into a bolus and pushes it to the oesophagus.
oesophagus	A muscular tube which uses contractions to move the bolus from mouth to stomach.
stomach	Mix with acid and enzymes to turn food into a paste.
liver	Produces bile to break down fat.
pancreas	Produces enzymes which break down fats, proteins and carbohydrates.
small intestine	Absorbs nutrients from the food.
large intestine	Helps absorb water from the food.
rectum	Holds the stool until you go to the toilet.
anus	Where the stool is released.



Key Learning

Describe the simple functions of the basic parts of the digestive system in humans.

Fascinating facts!

Our stomach can stretch. An adult's stomach can hold approximately 1.5 litres of food and drink.

Our oesophagus is approximately 25cm long.

Are you a Milecastle Meqmind?

What are the names of all the organs involved in the digestive system?

What is peristalsis?

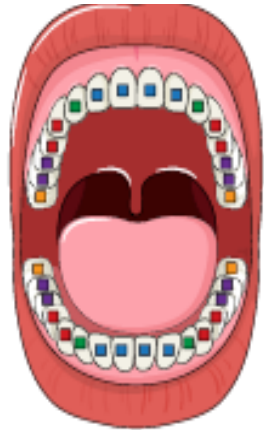
How long does it take for food to travel to the stomach once you have swallowed it?

Year 3 Science - Teeth and Food Chains

Key Vocabulary

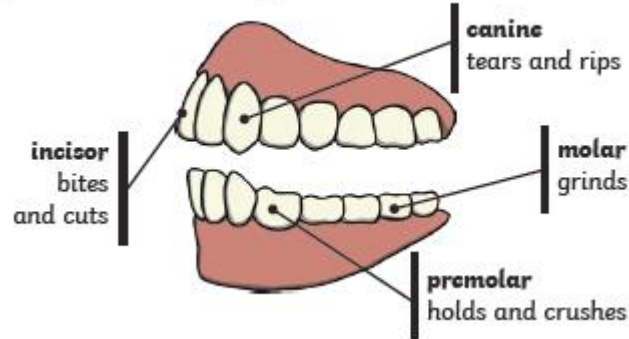
incisors	They are flat and sometimes described as a spade shape. They are used for biting and cutting food.
canines	They are pointy and sometimes referred to as 'fangs'. We use our canines to tear and rip food.
pre-molars	They are small and have a flat top. They hold and crush food.
molars	They are our largest teeth and have a flat top. They are used to grind out food before we swallow it.
food chain	Living things which are linked together because each thing feeds on the one next to it in the chain
herbivore	An animal that eats plants.
carnivore	An animal that feeds on other animals.
omnivore	An animal that eats plants and animals.
producer	A plant that produces its own food.
predator	An animal that hunts and eats other animals.
prey	An animal that gets hunted and eaten by another animal.

Human Teeth



- Key**
- incisors
 - canines
 - pre molar
 - molars
 - wisdom

Human Teeth and Their Functions

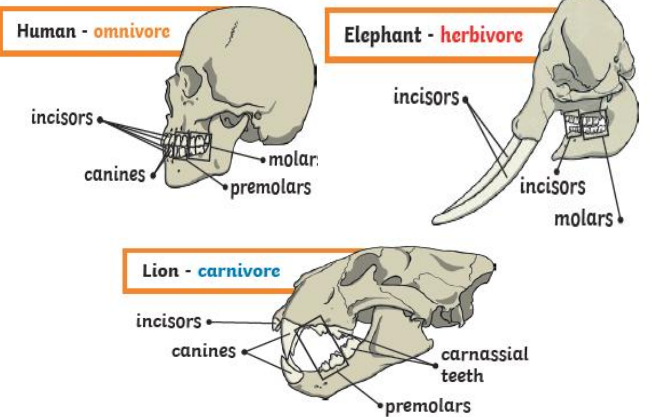


Key Learning

Identify the different types of teeth in humans and their simple functions.

Construct and interpret a variety of food chains, identifying producers, predators and prey.

The teeth of an animal are designed to eat different foods depending on the diet of the animal.



An Example of a Food Chain

The arrows in a food chain show the flow of energy.

